

# APARTMENT FOR LEASE/SALE NAYLOR ROAD



Location: Atur Park, Bldg 10, Flat no.15, Pune – 411001.

Particulars: 2020sq. ft. (3 BHK + Terrace)

Location Features:

- Atur Park—one of the popular residential developments on Koregaon Park Road—is developed by Atur India Pvt. Ltd. It has lavish and thoughtfully designed residences
- Well connected to:
  - Business Hubs ( Bund Garden Road, Boat Club Road, Mangaldas Road, Koregaon Park, Kalyani Nagar, Viman Nagar)
  - Schools (J N Petit School, St. Felix High School)
  - Colleges ( St. Mira College, Wadia College)
  - Retail Destinations (Plaza Centre, Mariplex, Pune Central, Phoenix Market City, Inorbit Mall)
  - Healthcare facilities (Ruby Hall Clinic, Jehangir Hospital, N M Medical Centre, Inlaks & Budhrani Hospital, Express Clinic)
  - Hotels (Vivanta by Taj, St Lurn, The O Hotel, Sun N Sand)

Amenities:

- Spacious room size + personal terrace for family functions/parties
- Swimming pool
- Landscaped garden
- Car parking available
- Visitor's car park
- Elevator
- 24 hr power backup
- Maintenance staff
- Organized security for the community

Potential Users:

- Families
- Corporate guest house/quarters etc.



Actual Photograph – Atur Park

## Location Map



Click on map for location on Google

18°31'59.22"N/ 73°53'06.54"E

\*Interior upgrades up to ₹ 1 lakh available with payments deferred over lock in period.



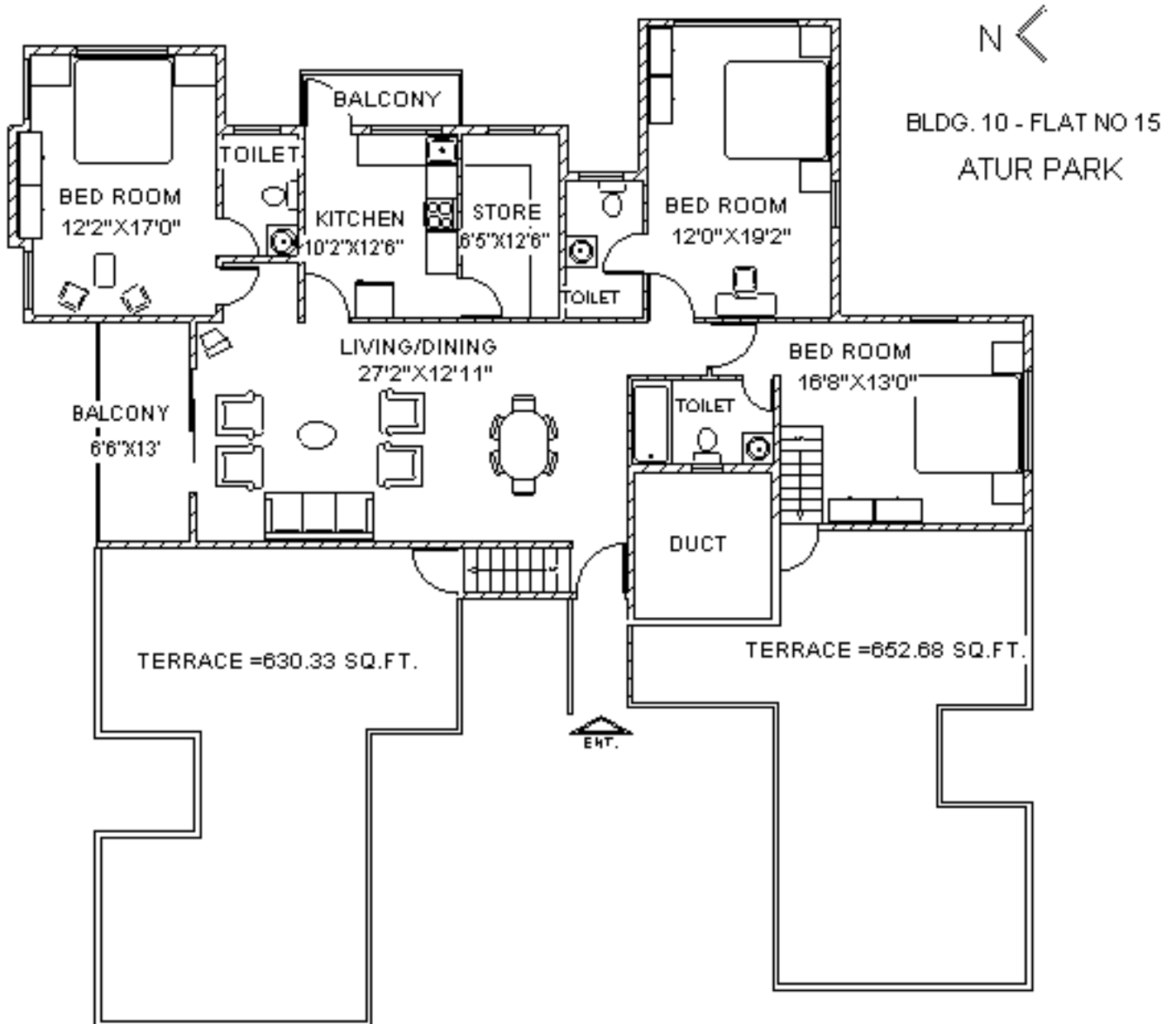
BUILDING WITH IQ

For leasing information contact: **Ms. Jaya John | 98505 68017 | Email- jaya@gera.in**

Gera Developments Pvt. Ltd. 200, Gera Plaza, Boat Club Road, Pune - 411 001, India.

Leasing: 020 2616 5580 | Fax: 91 20 26163653 | Email: leasing@gera.in | www.gera.in

# Flat N0 15



BUILDING WITH IQ

For leasing information contact: **Ms. Jaya John** | 98505 68017 | Email- [jaya@gera.in](mailto:jaya@gera.in)

Gera Developments Pvt. Ltd. 200, Gera Plaza, Boat Club Road, Pune - 411 001, India.

Leasing: 020 2616 5580 | Fax: 91 20 26163653 | Email: [leasing@gera.in](mailto:leasing@gera.in) | [www.gera.in](http://www.gera.in)